

WASHROOM SOLUTIONS



Rap
INTERIORS

Hello...

We are Rap Interiors.

Delivering fantastic Interior Design, Refurbishment, Fit Out, Relocation & Space Planning Solutions for UK businesses since 1988!

Experts in on-trend fit outs for offices, schools, care homes and more across all markets.

Contents

Washroom Rules	4
----------------	---

Washrooms

2D Design	10
3D Visuals	14
End Results	20



WASHROOM RULES

Dimensions, Sizes & Regulations

Every washroom must be designed with the user and location in mind.

For example, toilet cubicles vary in accessibility in different settings. Leisure centres, schools, commercial properties and hospitals all have different toilet cubicle layouts and numbers required to meet HSE requirements,





Dimensions

Standard Cubicle Dimensions

Every standard cubicle by law, must now have a minimum of a 450mm diameter for the user to manoeuvre in. We have highlighted the following sizes to outline a recommended guide on toilet cubicle dimensions:

- Standard Dimensions - 850mm wide x 1500mm deep
- Inward Opening Door Type

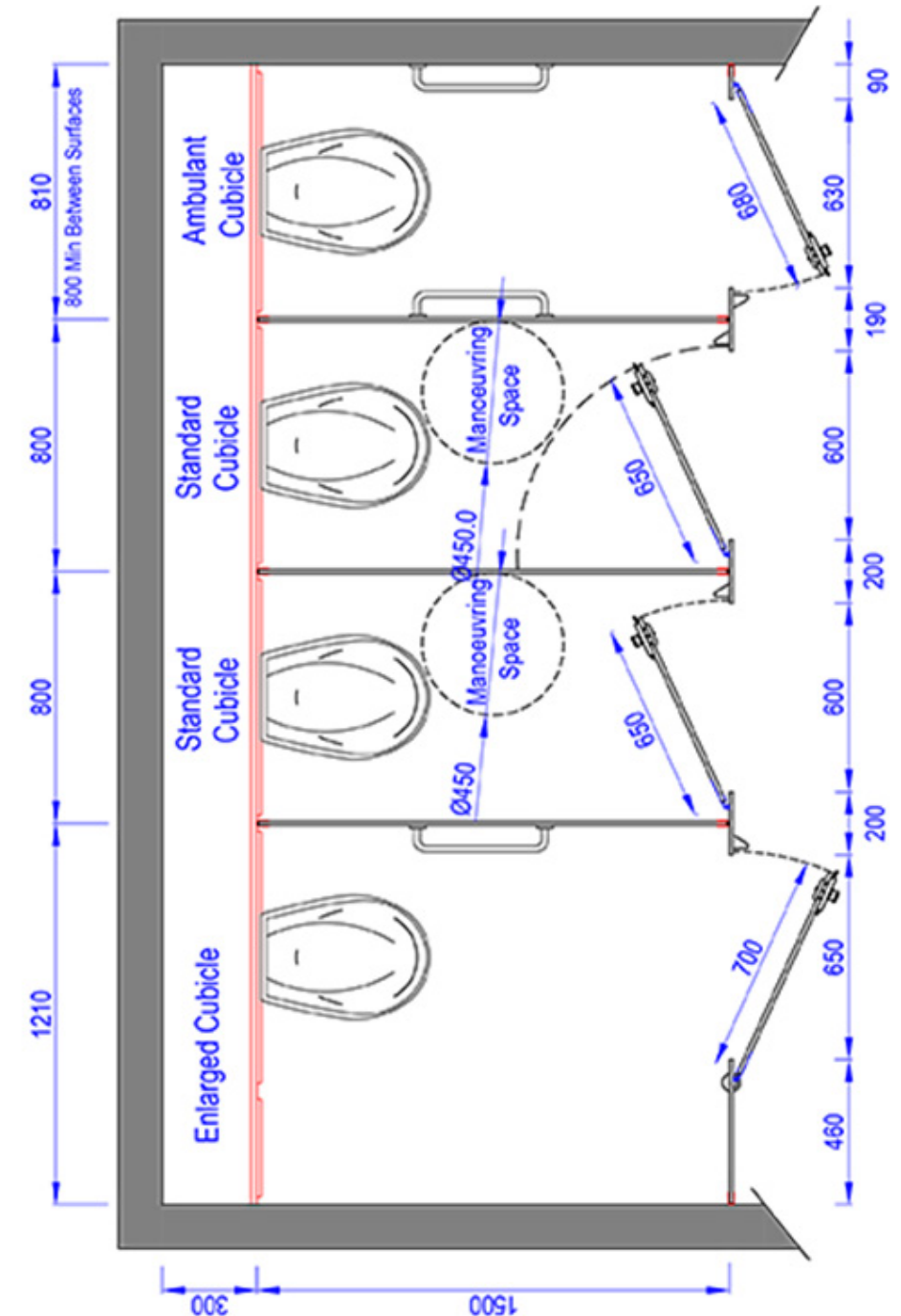
Indicator-bolts must also be capable of being operated with a closed fist (i.e., easily accessible for people with mobility issues) and doors must operate in such a way that complies with emergency evacuation procedures. If the cubicle were to collapse, or become damaged, the user must be able to get out without becoming trapped.

Disabled Toilets

Obviously, disabled toilets are naturally required to be bigger in order to accommodate for both wheelchairs and the physically impaired.

Every same sex toilet cubicle should have a minimum of one WC cubicle suited for such users. If the establishment in question only has one toilet cubicle, then it must be suitable for an ambulant user. The toilet cubicle must also feature an outward opening door for accessibility.

- Standard Dimensions - 850mm wide x 1500mm deep (800mm minimum width between surfaces)
- Outward Opening Door Type



Dimensions

Enlarged Cubicle Dimensions

These toilet cubicles are comprised of a single washroom with 4 or more cubicles inside. These enlarged cubicles must have a width of 1210mm and include an outward opening door. Both horizontal and vertical rails are also a requirement in order to assist the user if necessary.

- Standard Dimensions - 1210mm wide x 1500mm deep (1200mm minimum width between surfaces)
- Outward Opening Door Type

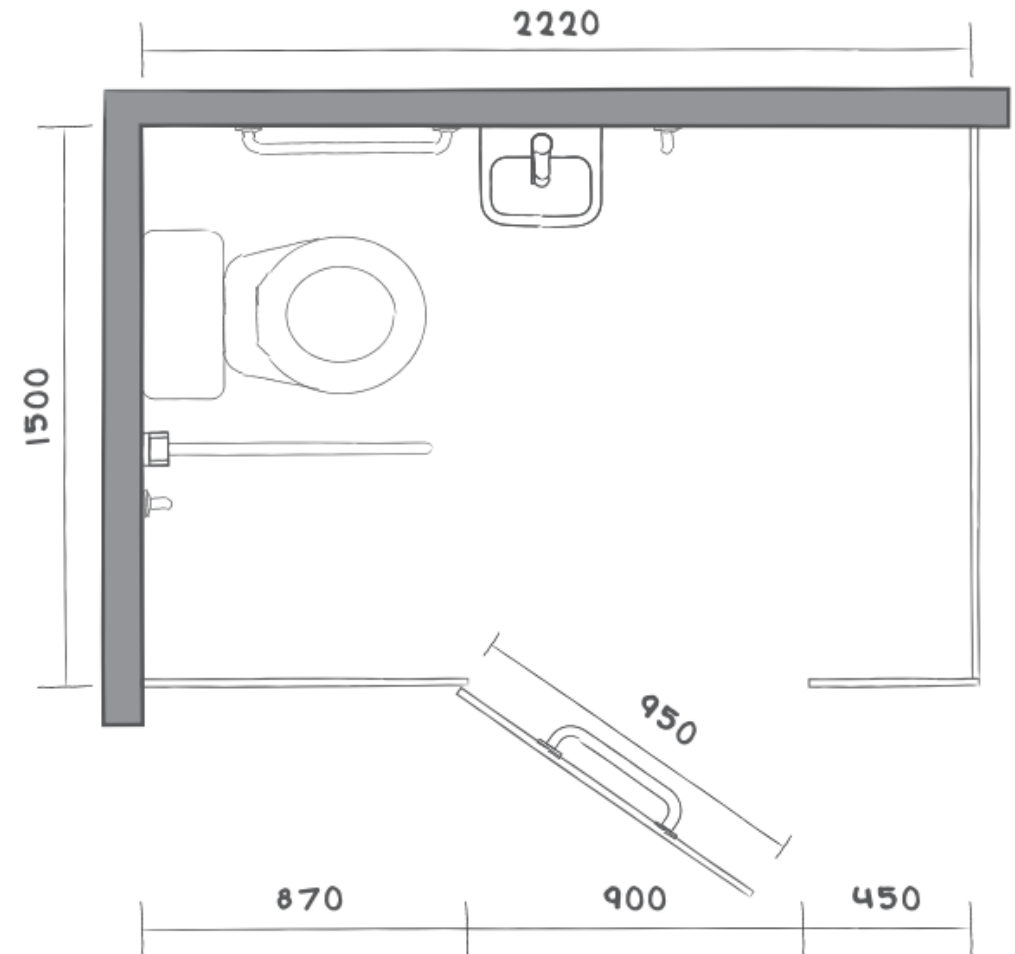
Wheelchair Accessible Toilets

Similar to the enlarged cubicle toilet, wheelchair access is of paramount importance for the physically impaired.

The disabled toilet dimensions have recently been restructured in order to accommodate a cubicle length of 2220mm, as opposed to its previous measurement of 2000mm.

The outward opening door needs to be 950mm wide and have a 900mm opening.

- Standard Dimensions - 2220mm wide x 1500mm deep
- Outward Opening Door Type



Regulations - Office

How many toilets should a workplace have?

The relevant legislation is the Workplace (Health, Safety and Welfare) Regulations 1992. Regulation 20, Sanitary conveniences, states:

1. Suitable and sufficient sanitary conveniences shall be provided at readily accessible places.
2. Without prejudice to the generality of paragraph (1), sanitary conveniences shall not be suitable unless -
 - the rooms containing them are adequately ventilated and lit;
 - they and the rooms containing them are kept in a clean and orderly condition; and
 - separate rooms containing conveniences are provided for men and women except where and so far as each convenience is in a separate room the door of which is capable of being secured from inside.

The Approved code of practice goes on to give minimum numbers of facilities:

(The number of people at work shown in column 1 refers to the maximum number likely to be in the workplace at any one time)

Number of toilets and washbasins for mixed use (or women only):

Number of people at work	Number of Toilets	Number of Washbasins
1-5	1	1
6-25	2	2
26-50	3	3
51-75	4	4
76-100	5	5

Toilets Used by Men Only:

Number of men at work	Number of Toilets	Number of Urinals
1-15	1	1
16-30	2	1
31-45	2	2
46-60	3	2
61-75	3	3
76-90	4	3
91-100	4	4

For more details please visit: <http://www.hse.gov.uk>

Regulations - Education

Nursery (age 3-5 years)

Sanitary Appliance	Number of sanitary appliances
WC	1 per 10 pupils or part thereof, not less than 4
Washbasin	1 per WC
Deep sink, bath or shower	1 per 40 pupils

Primary (age 4-11 years)

Sanitary Appliance	Number of sanitary appliances	Remarks
WC and urinal	1 per 10 pupils under 5 years; and 1 per 15 pupils over 5 years, or part thereof	Not more than 2/3rds of boys' appliances to be urinals
Washbasin	1 per WC / urinal	Every WC / urinal to be close to a washbasin
Shower (where provided)	1 per 10 males or part thereof 1 per 10 females or part thereof	

Secondary (age 11+ years)

Sanitary Appliance	Number of sanitary appliances	Remarks
Boys' WC and urinal	1 per 20 pupils, or part thereof	Not more than 2/3rds of appliances to be urinals
Girls' WC	1 per 20 pupils	
Washbasin	1 per WC / urinal where there are up to 3 appliances; 2 per 3 WC / urinal where there are more than 3 appliances	Every WC / urinal to be close to a washbasin
Shower (where provided)	1 per 10 males or part thereof 1 per 10 females or part thereof	Easily accessible from all places where physical education takes place

Separate staff facilities should be provided in accordance with 'Office washrooms' (above), except that facilities for disabled staff may be shared with pupils.

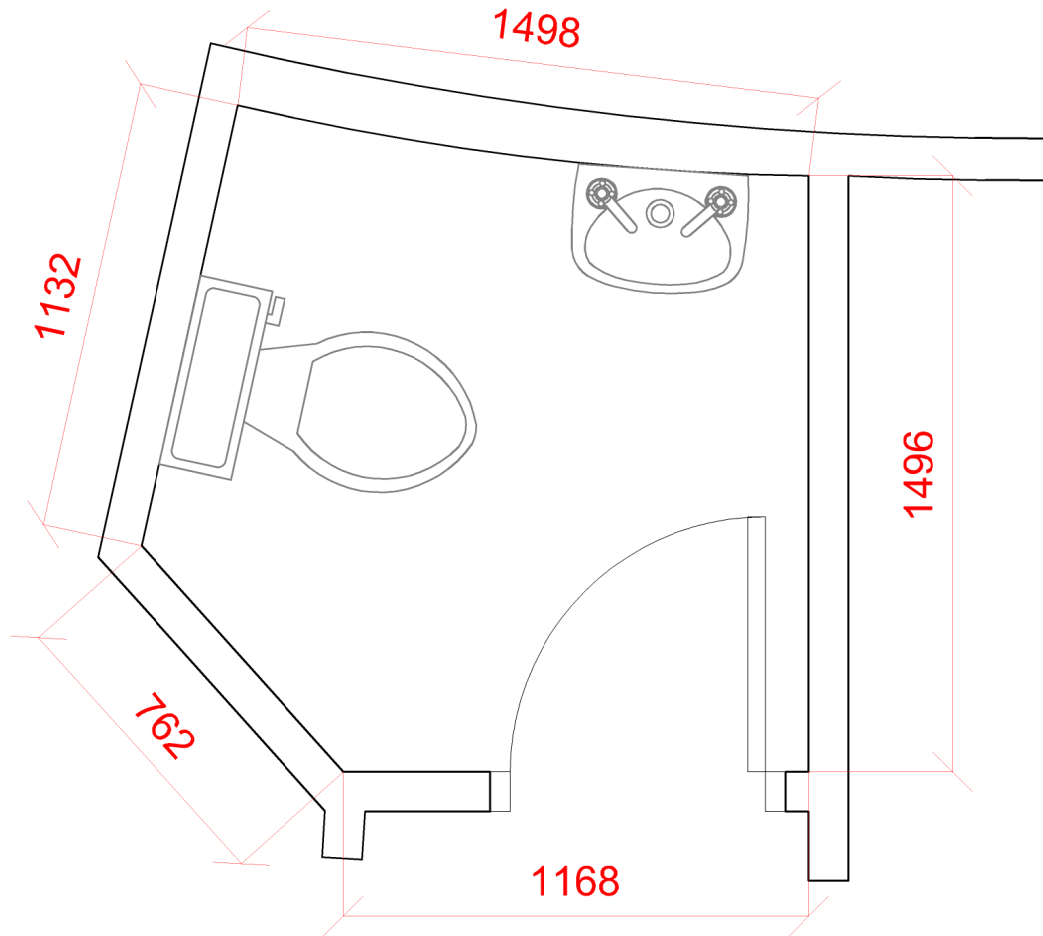
Where pupils are 8 years old or over, changing rooms and sanitary facilities for PE staff should be in addition to and separate from sanitary facilities for pupils.

2D DESIGN

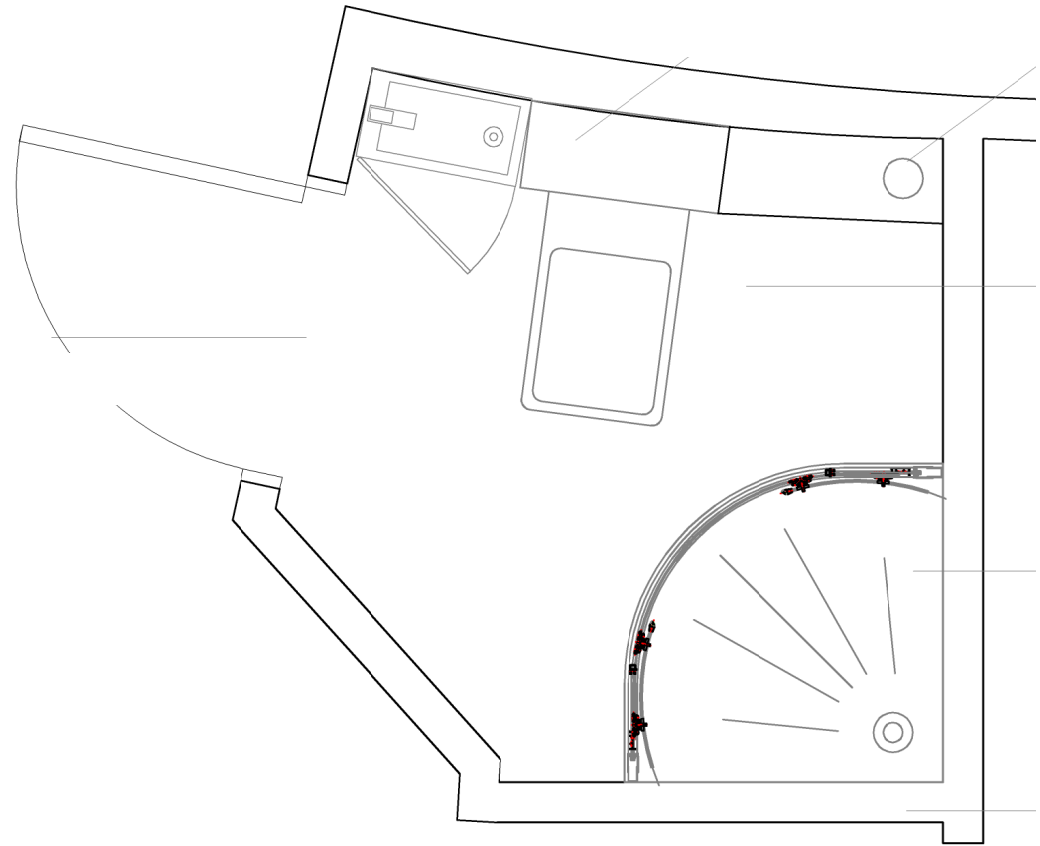
Space Planning

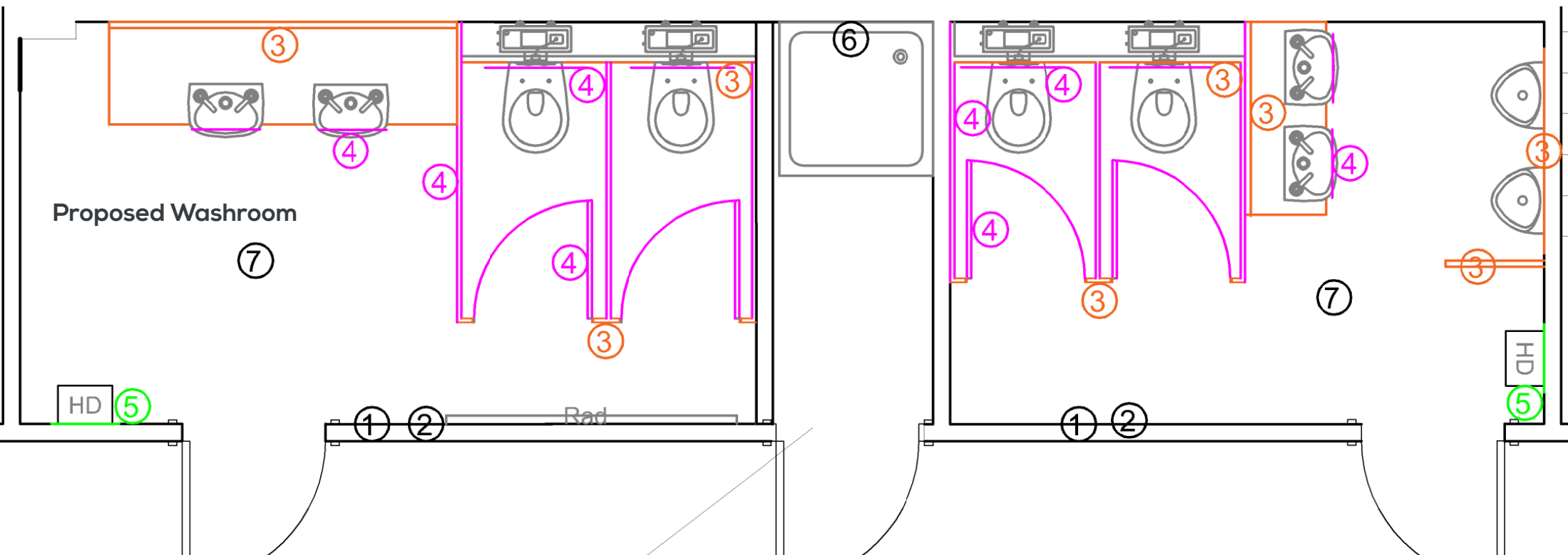
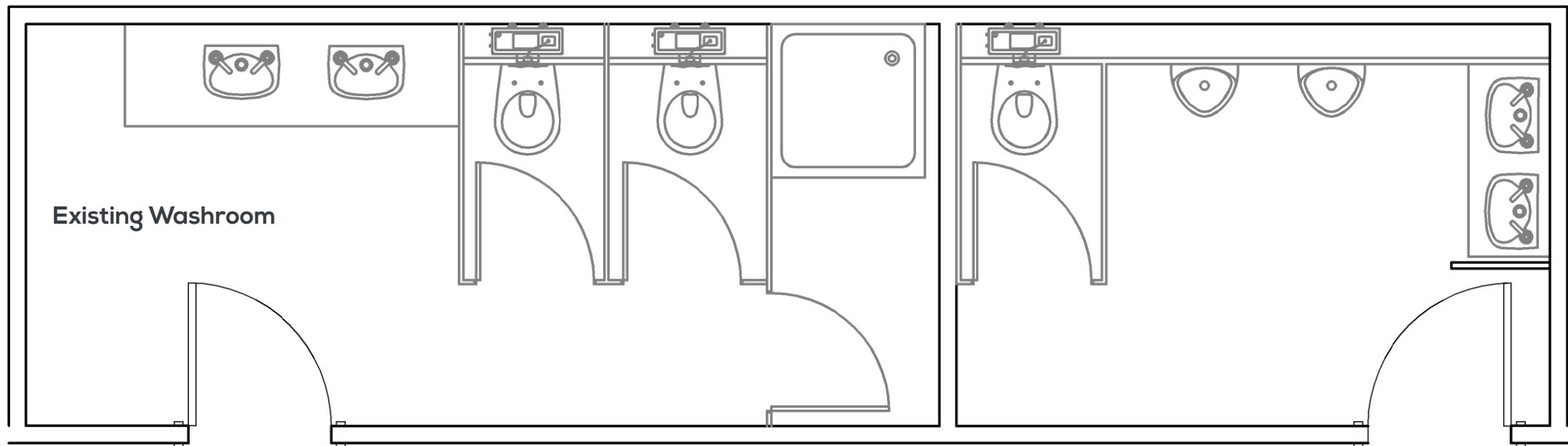


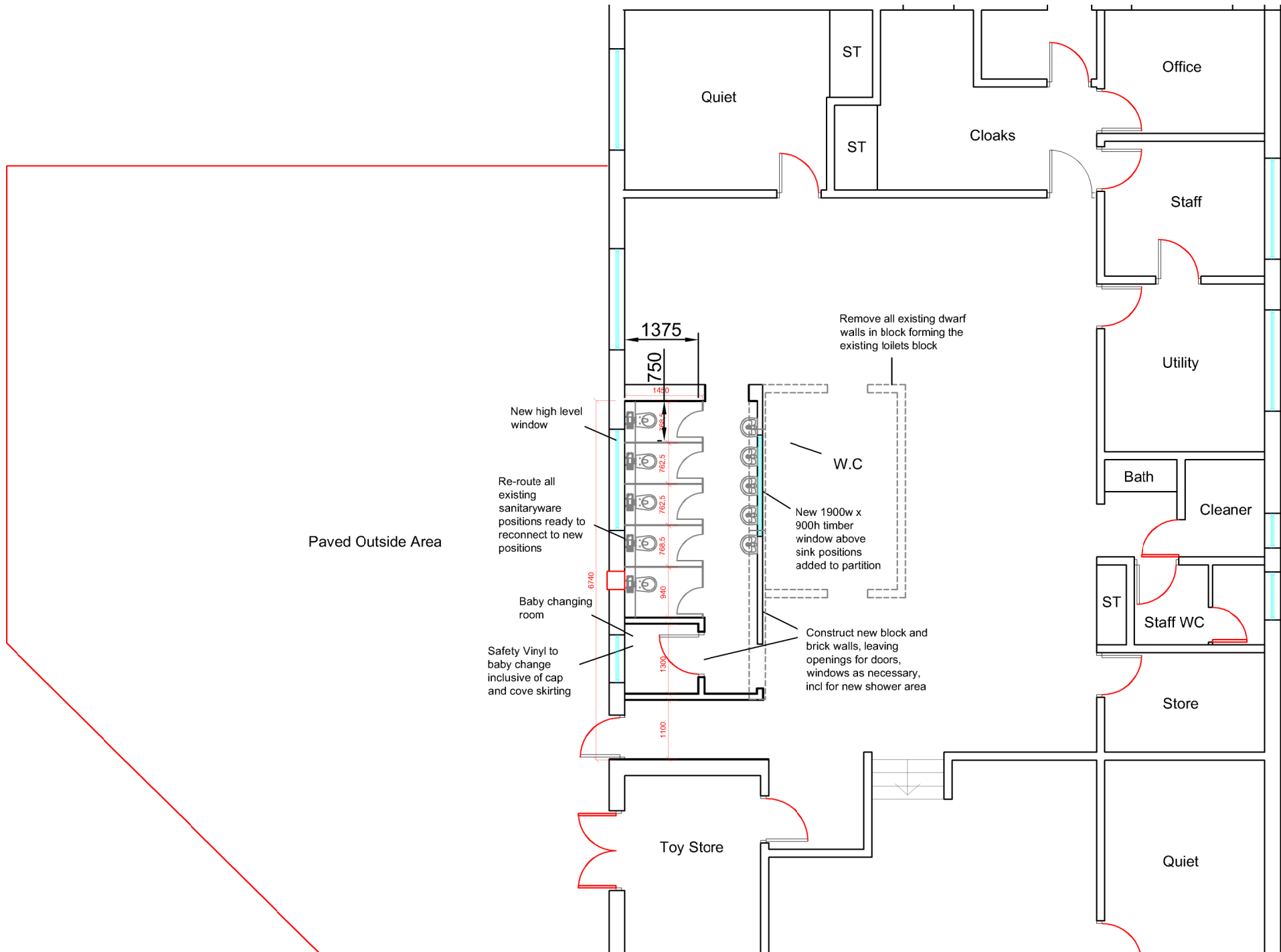
Existing



Proposed







3D VISUALS

Interior Design

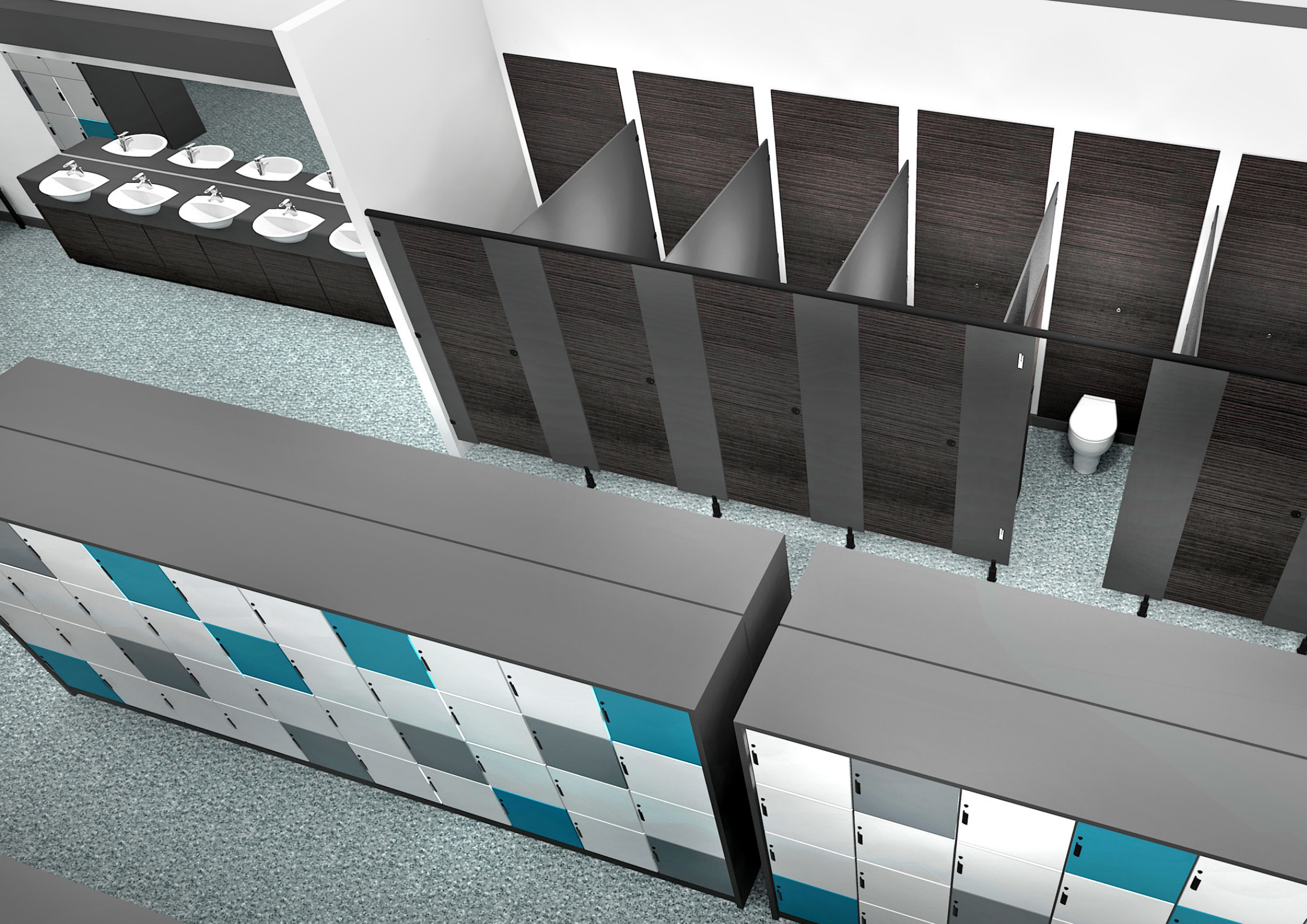












END RESULT

Refurbishment & Fit Out





























Feeling Inspired?

We are proud of who we are and what we do and we openly invite you to do all or any of the following:

- Visit Our Head Office
- Take Up References
- Meet Our Team
- Request One Of Our Brochures
- Arrange A Consultation

Or

- Just Contact Us For A Chat On How We Transform Spaces From Drab To Fab!

Remember,
We work with all sorts of businesses from all sorts of industries including the following:

- Office
- Commercial
- Education
- Healthcare
- Leisure & Retail
- Industrial
- Co-working

Whatever your interior needs,
we've got the solution!

FOLLOW US ON
SOCIAL MEDIA



Rap Interiors Ltd

6 Orchard Industrial Estate
Christen Way
Maidstone
Kent
ME15 9YE

Tel: 0333 600 1234

Fax: 01622 663131

Email: refurb@rapinteriors.co.uk
www.rapinteriors.co.uk

DESIGN . FIT OUT . REFURBISHMENT . DILAPS . FURNITURE